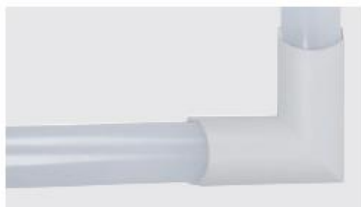
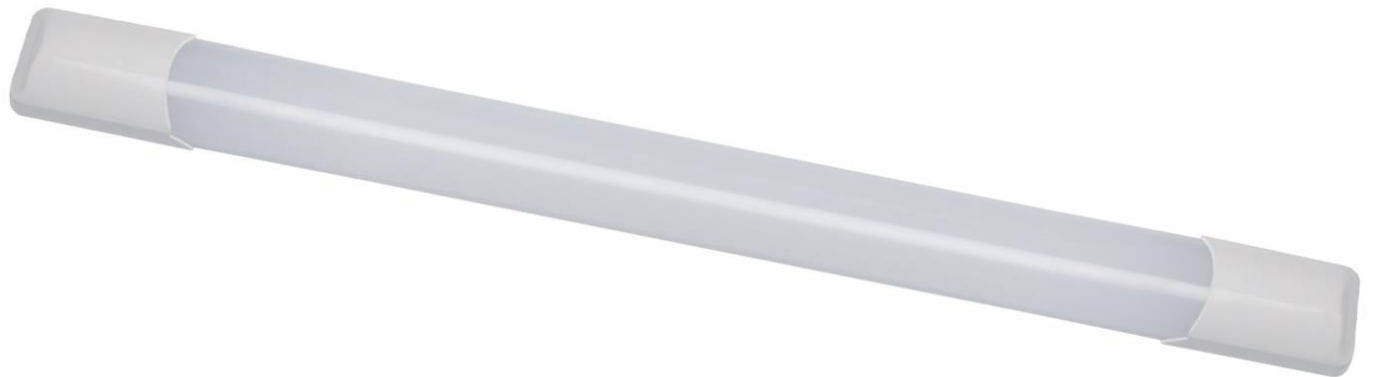


ELMARK[®]

The Brand of Electricity

LED LIGHTING FIXTURE MOD



TECHNICAL SPECIFICATION

INDOOR- LED FIXTURES

ELMARK[®]

The Brand of Electricity

Technical data:

- Rated voltage: 85-265V/ 50-60Hz
- Power: 18W; 36W;
- Power supply: Driver mounted in the body
- Colour temperature: 4000K
- LED source: Sanan SMD 2835
- Colour: White
- Body: PP+Iron
- Colour rendering index: Ra≥80
- Beam angle: 120°
- Switch on/off: >20 000
- Long life: 30 000h
- Starting time: <1s
- Clips: Inox
- Protection against dust and moisture: IP40

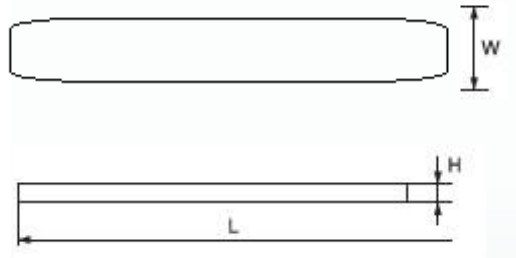
Features:

- Completely replace traditional lighting fixtures
- Pleasant and uniform light distribution
- Low power consumption
- Repeated switch on/off does not affect the lifespan
- Safety, low voltage operation
- Instant light with maximum luminous flux
- Environmentally friendly - no mercury and lead
- No ultraviolet and infrared rays

Area of application:

- Residential buildings
- Commercial buildings
- Administrative buildings
- Banks
- Hospitals

Variants and Dimensions:



Watt	Whole fixture lumens	Colour temp.	Colour body	Size (mm)			Catalogue number
				Length	Width	Height	
(W)	(lm)	(K)					
18	1100	4000	White	615	54	34	9ALLY22LED
36	2200	4000	White	1215	54	34	9ALLY44LED

ACCESSORIES FOR MOD FIXTURE

- **Catalogue number**

9MODL

135x135x45mm



CONNECTOR 90°
L-TYPE

- **Catalogue number**

9MODI

210x58x45mm



COUPLING 180° I-TYPE

- **Catalogue number**

9MODT

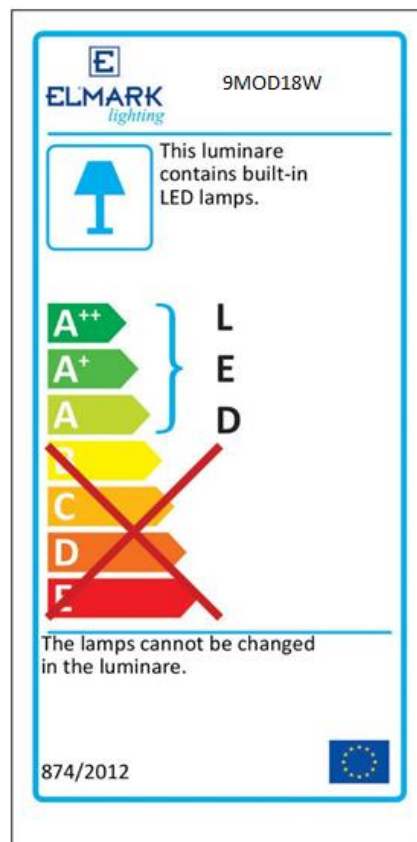
210x135x45mm



T-JOINT

Barcodes:

9MOD18W	3800131214317
9MOD36W	3800131214324
9MODL	3800131214348
9MODI	3800131214355
9MODT	3800131214331



EN 55015 • EN 61000-3-2 • EN 61000-3-3 • EN 61547 • EN 60598-1 • EN 60598-2-2 • EN 61347-1 • EN 61347-2-13 • EN 13032-4

